

Curated portfolio 2025

# GEORGE SINGER



## ABOUT

George Singer is a multi-award-winning artist based in London. In 2025 George won first prize for best lighting installation at the Red Dot Awards, the International Architecture and Design Awards, and the Lighting Design Awards. All three prizes were for Lua- a lighting installation commissioned for a private residence in North Vietnam. In 2017 George won first prize for best lighting installation at the prestigious International Design and Architecture Awards, as well as first prize at the Darc Awards. Both prizes were for Zephyr:- a 60-meter-long, permanent lighting installation for the Fairmont Hotel in St Andrews, Scotland. His design methodology combines conceptual thinking with a thorough understanding of materials and production techniques. He produces objects of beauty, allowing the materials and form to work in harmony to dictate the aesthetic.

## METHOD

All George Singer products are hand-made in his London studio. All materials are UK-sourced and all installations are carried out by George and his team. As well as designing for a variety of London-based architects and interior design companies, George also carries out installations abroad in countries such as Switzerland and Dubai.

All chandeliers and installations are bespoke and George always works very closely with the client in order to achieve the most satisfactory result. Whether it's a small residential project or a large commercial project, George prides himself in obtaining a thorough understanding of the flavour of the space and the vision of the architect or designer. It is this understanding that allows him to design intelligently and sensitively, where the aesthetic of the chandelier will not only complement the space, but bring an exciting, fresh and new form of contemporary beauty.

## STORY

George graduated from Central Saint Martins College of Art and Design in 2002. After working at numerous design houses, included Mathmos, Totem Studio, Brydenwood Associates, George became an independent designer in 2006. His first commission came after exhibiting the Medicine Chandelier at London's 100% Design show where he won the opportunity to design three large chandeliers for Conran's famous Bluebird restaurant in Chelsea, West London.

George now works from his studio in Woolwich, London.





## LUA INSTALLATION, VIETNAM 2025

Commissioned for a private residence in North Vietnam, Lua is made from over twenty thousand solid glass balls, each meticulously hand-painted in shades of amber and frosted white. Its form was inspired by the natural flow of silk, with gentle undulating curves and sweeping folds that create a sense of elegance, serenity, and grandeur.

Designed in collaboration with digital artists, Onformative, Lua was developed using advanced simulation technology that translated the movement of silk into a sculptural form impossible to create by hand. The placement of each glass ball is guided by the “tension” within the digital silk model, merging craftsmanship with cutting-edge technology.

Illuminated from above by John Cullen spotlights and lit from within by hundreds of fibre optic lights, Lua offers a dynamic lighting experience — from soft, tranquil evening mode to vibrant party mode — all controlled via a wall-mounted iPad.

Lua stands as a statement of how digital innovation and artisanal craftsmanship can combine to express a new, elevated form of contemporary beauty.

Lua is the Vietnamese word for silk.





## ZEPHYR INSTALLATION, SCOTLAND 2017

Zephyr, a lighting installation for the Fairmont Hotel in St Andrew's, Scotland, won two prestigious awards this year: The Darc Award, and The International Architecture & Design Award.

At 60 meters in length Zephyr is one of the largest lighting installations in the world and is designed to reflect the surrounding nature: the crashing waves, the long grasses blowing in the wind, the enormous cloud formations, the rolling hills, the murmurations of starlings, shoals of fish and the blossom trees, and the sheer energy and beauty of St Andrew's Bay.

The form for the Zephyr installation was designed in collaboration with the Berlin-based company, Onformative.





## ROSEUS CHANDELIER, 2022

The Roseus chandelier was designed and made for the Malmaison Hotel in York, England.

Made from hundreds of solid acrylic rods and incorporating a full colour-changing LED central light source and spots, the colour of the chandelier can be easily changed with a smartphone App.

Photo credit: Martina Ferrera





## XENIA CHANELIER, GLASGOW 2018

The Xenia chandelier was designed for a beautifully-restored period town house in Glasgow.

The aesthetic of the chandelier reflects the contemporary Art Deco style of the interior and provides a grand statement running the full length of the stairwell.

Made from more than ten thousand large crystals, over a length of 14 meters, the Xenia chandelier is illuminated internally by high-quality daylight LEDs. The antiqued, hand-made bronze suspension rings and the grey-brown colouration of the crystals allow the chandelier to compliment the warm, muted colour palette of the interior.

The whole chandelier was hand-made in the George Singer London studio.





# GEORGE SINGER



DECO CHANELIER,  
LONDON 2011

In a private commission, the original Deco Chandelier was given as a twentieth wedding anniversary gift from the client to his wife.

Their large Paddington house is filled with lovely Art Deco furniture, posters, rugs and ornaments, and that style was to be reflected in the chandelier whilst remaining sleek and contemporary.

The hand-made, fluted glass tubes are individually suspended via tiny laser-cut acrylic disks which can be coloured or transparent to suit the client. This unique suspension method allows the tubes to hang vertically, without the need for metal pins or clips, showcasing the glass to its maximum potential.

Other Deco Chandeliers have been commissioned in various colours, shapes and sizes and exist in some of the luxury apartments in the Albion Riverside building, designed by Foster and Partners.





## MELT CHANDELIER, HANOI 2024

The Melt chandelier, designed for a private client in Hanoi. The 4500 glass droplets, hand-made in Italy, were painted in London using special glass paint from Paris. The steel and bronze ceiling structure was hand-made by highly-skilled fabricators in London. The high-quality spots, made in the UK, are by John Cullen, and the whole recessed surface is covered with 22 carat gold leaf to provide a rich, warm, honey-coloured glow.

Designed to be a visually relaxing centre-piece for this grand dining room, the parabolic form reflects the 'heat' generated from the centre of the conversation around the table. The cool, emerald green fades to warm amber as the form 'melts'.





# GEORGE SINGER



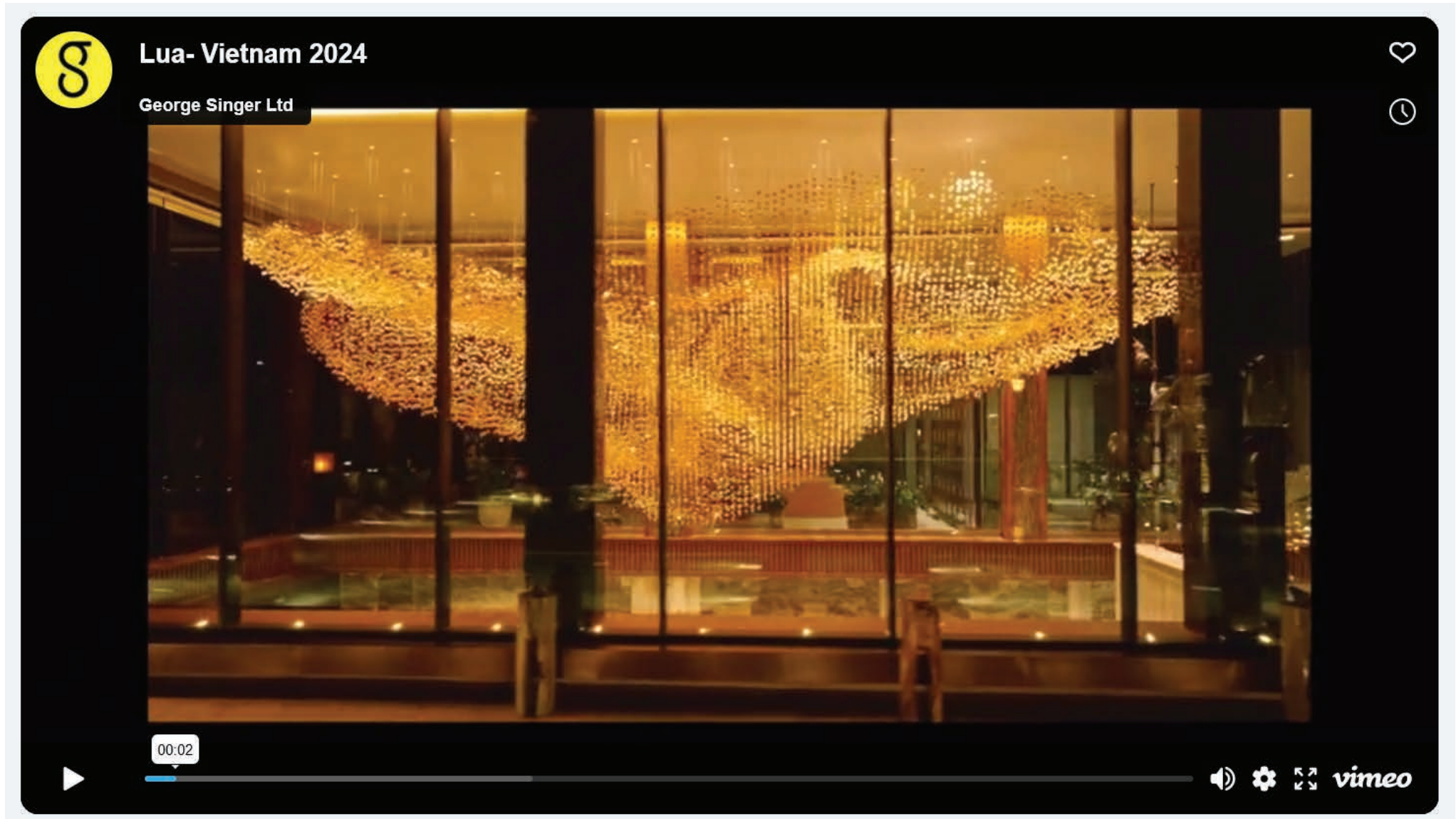
## BATTERSEA INSTALLATION, LONDON 2023

The Battersea installation was created for the lobby of Norman Foster's new Oakley House building next to Battersea Power Station in Central London.

Made of 150 hand made glass pendant lights, the installation provides an elegant, large-scale centrepiece to accompany this beautifully-appointed lobby. Neutral-white LEDs and fluted glass shades compliment the subtle and understated grandeur of the interior design.



# GEORGE SINGER



Lua - reveal film

VIDEO <https://vimeo.com/1136103812>



# GEORGE SINGER



**CONRAN+**  
**PARTNERS**  
Architects Designers

Foster + Partners

**D&D**  
LONDON

**vitra.**

*Radisson* **BLU**

  
**VEOLIA**  
ENVIRONMENTAL  
SERVICES



FOSTERLOMAS

CALLENDER HOWORTH



**Victoria Practice**  
Aldershot Centre for Health

100%**design**  
london

**wetransfer**<sup>™</sup>

**ghd**

BANNENBERG  
ROWELL  
DESIGN

**EF MEDISPA**  
INTELLIGENT SKIN CARE

# GEORGE SINGER



*"Working with George has been an absolute pleasure, his knowledge of materials in combination with extensive engineering expertise and great design skills has produced outstanding results for us and ultimately our clients. We look forward to working with George on future projects."*

Benedict Wilhelm  
Campaign

*"When we commissioned George to design and build a chandelier to celebrate our crystal wedding anniversary it was a decision we are delighted to have made. He took incredible interest in what we wanted and spent time honing the ideas until the plan was agreed. What he delivered is an amazing piece of art for our house and something we will cherish. Turning on the hall light will never be the same again!"*

Peter & Karen Gillingwater

*"I met George just after he left St Martins and he helped me with installations at the Victoria and Albert Museum and at the British Airways Lounge in Heathrow. It's great seeing him doing his own things now, he has always been good at making things and has a great eye for design and technical wizardry."*

Tord Boontje

*"Conran + Partners have worked with George Singer on several occasions with fantastic results. George is able to take our overall concept ideas for a space and come up with designs that enhance and support them whilst surpassing our expectations. He is wonderful to work with and our clients really enjoy interacting with him. His pieces have become the focal point of the spaces they are installed in and receive many compliments. We look forward to more collaboration in the future!"*

Tina Norden RIBA  
Associate Director  
Conran and Partners

*"George designed and made a chandelier for a very affluent client of ours in the Swiss Alps. He understood exactly the kind of thing we were looking for and his aesthetic eye and knowledge of materials was excellent. The quality of the engineering and assembly was very high and we were delighted with the result."*

Totally recommended".

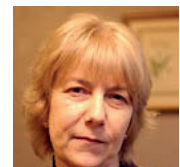
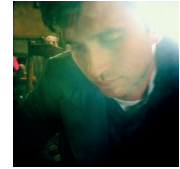
Mark Howorth  
Director - Callender Howorth

*"George has worked with us on a consultancy basis for a number of years; he has exemplary design skills and a working professional knowledge of manufacturing both in the UK and abroad which has proved invaluable to us in the development of a number of new products."*

Ian Hume  
Director - Totem Studio

*"Working with George was a practical and creative experience. We were delighted with the finished project, a joint exercise with Hannah Mc Vicar. Their skills complemented each other and to this day the chandelier continues to delight all visitors to Aldershot Centre for Health."*

Sandra Young  
Director - The Wilky Group Ltd





# GEORGE SINGER



GEORGE SINGER Ltd,  
6-203, Unit 6,  
Thames Side Studios,  
Harrington Way,  
London SE18 5NR

+44(0)7970 890 596  
george@georgesinger.co.uk  
www.georgesinger.co.uk

## SOCIAL MEDIA

[www.instagram.com/georgesingerstudio](https://www.instagram.com/georgesingerstudio)  
[www.facebook.com/georgesingerstudio](https://www.facebook.com/georgesingerstudio)  
[www.twitter.com/George\\_Singer](https://www.twitter.com/George_Singer)  
[www.pinterest.com/georgesinger/](https://www.pinterest.com/georgesinger/)

## VIDEOS

[www.vimeo.com/georgesinger](https://www.vimeo.com/georgesinger)